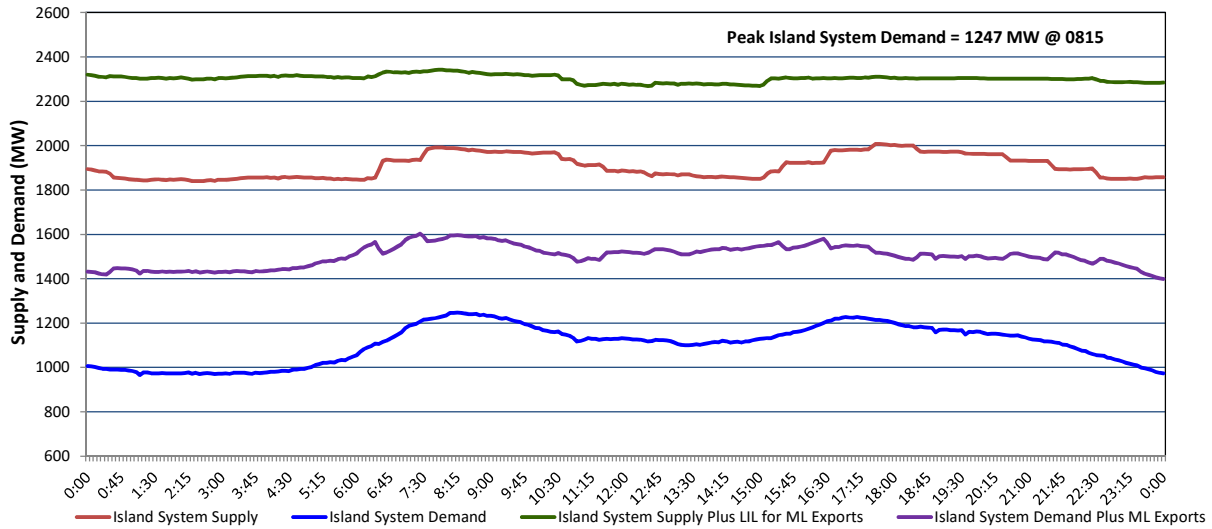


Newfoundland Labrador Hydro (NLH) Supply and Demand Status Report Filed Tuesday, December 03, 2024

Section 1 Island Interconnected System - Supply, Demand & Exports Actual 24 Hour System Performance For Monday, December 02, 2024



Island Supply Notes For December 02, 2024 ¹

A As of 0000 hours, October 20, 2024, Holyrood Unit 1 unavailable due to forced extension to planned outage (170 MW).

Section 2 Island Interconnected System - Supply, Demand & Outlook

Tue, Dec 03, 2024	Island System Outlook ²	Seven-Day Forecast	Island System Daily Peak Demand (MW)	
			Forecast ⁸	Adjusted ⁶
Island System Supply: ⁴	2,027 MW	Tuesday, December 3, 2024	1,285	1,205
NLH Island Generation: ^{3,7}	1,525 MW	Wednesday, December 4, 2024	1,320	1,240
NLH Island Power Purchases: ⁵	100 MW	Thursday, December 5, 2024	1,365	1,285
NP and CBPP Owned Generation:	215 MW	Friday, December 6, 2024	1,245	1,165
LIL/ML Net Imports to Island: ⁹	187 MW	Saturday, December 7, 2024	1,340	1,260
		Sunday, December 8, 2024	1,325	1,245
7-Day Island Peak Demand Forecast:	1,365 MW	Monday, December 9, 2024	1,290	1,210

Island Supply Notes For December 03, 2024

- Notes:
1. Generation outages for running and corrective maintenance are included. These are not unusual for power system operations. They generally do not impact customer supply. Hydro schedules outages to system equipment whenever possible to coincide with periods when customer demands are low and sufficient supply reserves are available. However, from time to time equipment outages are necessary and reserves may be impacted.
 2. As of 0800 Hours.
 3. Gross continuous unit output.
 4. Gross output from all Island sources (including Note 4).
 5. NLH Island Power Purchases include: ML Imports, Exploits Generation, Rattle Brook, Star Lake, Wind Generation and capacity assistance (when applicable).
 6. Adjusted for interruptible load and the impact of voltage reduction when applicable.
 7. Due to limitations inherent in the design of combustion turbines, the output of combustion turbines may be reduced in the event that ambient temperatures exceed the threshold required for full rated output. This threshold is dependent on the design of each turbine.
 8. Does not include ML Exports.
 9. LIL Import sunk in the Island System. Actual LIL flows will be restricted by various system conditions including, but not limited to, Island Load, ML Exports and Avalon Unit status.

Section 3 Island Peak Demand and Exports Information Previous Day Actual Peak and Current Day Forecast Peak

Mon, Dec 02, 2024	Island Peak Demand ¹⁰	8:15	1,247 MW
	Exports at Peak		350 MW
	LIL Net Imports to Island		2,111 MWh
Tue, Dec 03, 2024	Forecast Island Peak Demand		1,285 MW

Notes: 10. Island Demand is supplied by NLH generation and purchases, LIL Imports plus generation owned and operated by Newfoundland Power and Corner Brook Pulp & Paper (Deer Lake Power, DLP).